



What's New in Sage MAS 90 and 200 4.3?

Sage MAS 90 and 200 4.3 Delivers Customer Value

Based on the solid foundation that Sage MAS 90 and Sage MAS 200 ERP solutions have set for over 20 years, our latest release works the way you do—and delivers more value to growing companies like yours. Focused on the most requested customer enhancements, Sage MAS 90 and 200 4.3 incorporates more business intelligence, paperless office capabilities, direct deposit functionality, usability improvements, and complete business solutions.

The list of 4.3 enhancements is lead by additional Business Insights Explorer views, new charting capabilities, and Business Insights Dashboard features. To help you drive efficiency, enhancements include the incorporation of paperless office e-mail, fax, and document storage functionality, built-in Federal and State Tax reporting and eFiling capabilities. For both you and your employees, full direct deposit capabilities provide more efficient payroll and options for deposit selections. Many of the enhancements are process and module specific—resulting in streamlined workflows and improved everyday operational value.

With Sage MAS 90 and 200 4.3, we continue to listen to our customers and provide the functionality that you tell us is most important to you. The addition of new features and enhancements—along with a simplified upgrade process moving from 4.2—continues to provide you a low total cost of ownership.

BENEFITS

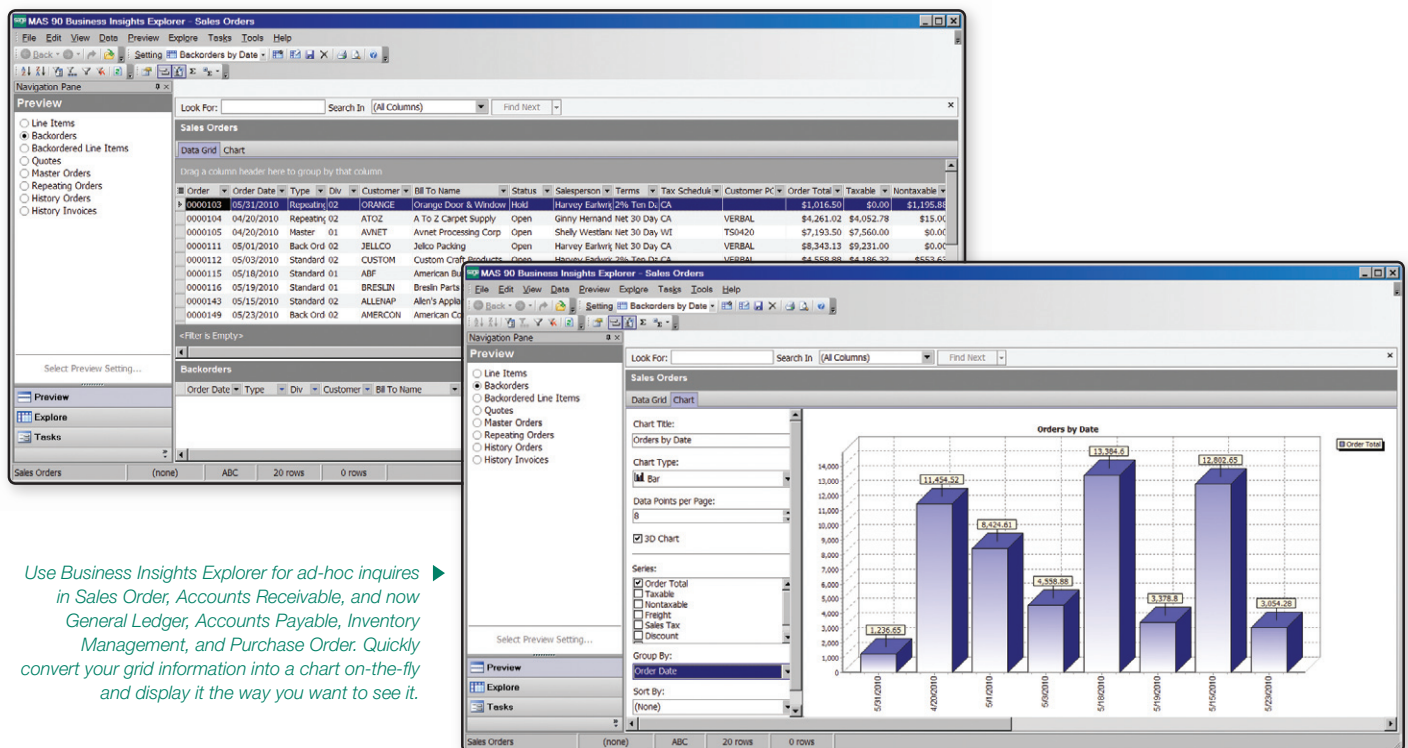
Go green—save money, time, and the environment using electronic document e-mail, fax, and efficient storage capabilities

Turn your data into actionable knowledge

Immediately access up-to-date information the way you want to see it

Streamline your tax reporting process

Provide employees safe and secure direct deposit choices



Use Business Insights Explorer for ad-hoc inquiries in Sales Order, Accounts Receivable, and now General Ledger, Accounts Payable, Inventory Management, and Purchase Order. Quickly convert your grid information into a chart on-the-fly and display it the way you want to see it.

Visibility Across Your Business

Business Insights Explorer and Business Insights Dashboard offer new capabilities in 4.3 to better enable you to turn data into actionable knowledge. New data-centric views have been added to Business Insights Explorer so you can gain even more visibility into your business. And, since a picture is worth a thousand words, from any personalized view you can create a chart to illustrate what you want to emphasize. Business Insights Dashboard allows you to print your dashboard sections or drill into the detailed information with ease.

Explore New Views and Charts

In addition to the original Sales Order and Accounts Receivable views, Business Insights Explorer now provides ad-hoc inquiry, drill-down, and drill-around capabilities into General Ledger, Accounts Payable, Inventory Management, and Purchase Order. The smartly designed, easy-to-use interface continues to provide drag and drop, sort, filter, calculations, color highlighting, and the ability to save your personalized views. The standard and additional views will allow you to provide your customers with even better customer service, improve your operations monitoring, and get more efficient use of Sage MAS 90 or 200.

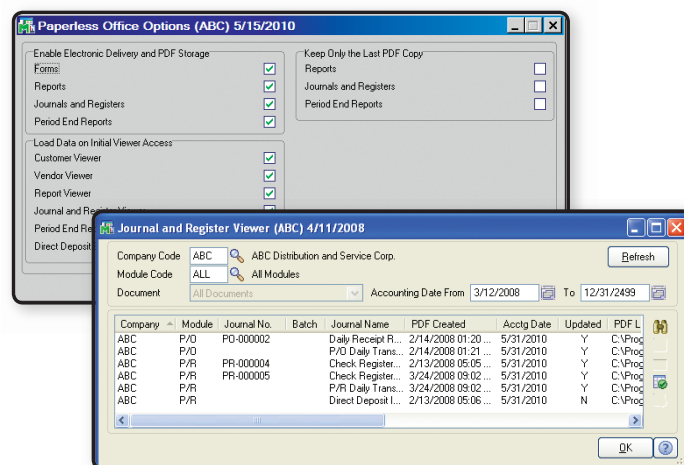
Quickly convert your Business Insights Explorer grid information into a chart and display your information the way you want to see it. Convert the data that best visualizes the knowledge you've discovered into a bar, line, area, or pie chart, add your title, and narrow to one or more selected series—so you can share with others inside or outside your company. You can further personalize by reordering data points and choosing how many data points you want to display with your charts created on-the-fly.

Start Your Day With the Information You Need Most

Select up to twelve standard graphical reports included in your 4.3 Business Insights Dashboard, to display the information you want to see right on your desktop startup page. Use a simple startup wizard to select which reports and graphs to display, the order in which you want to see them, and the level of detail that you want to include. Access more details directly from the dashboard, or view real-time summaries on the main dashboard page.

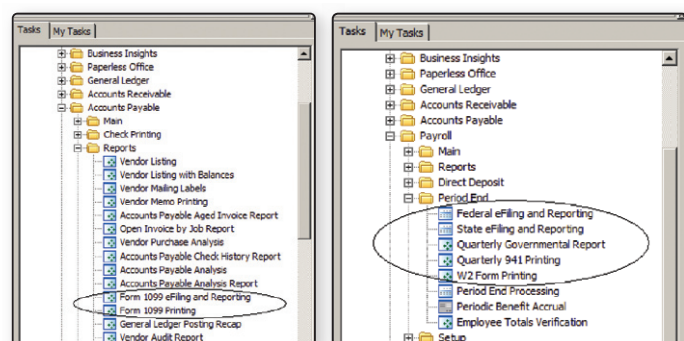
Increase Efficiencies Using Paperless Office

Save time, money, and the environment by using the paperless office capabilities provided to you in 4.3. Improve communications by efficiently e-mailing and faxing documents to your customers, prospects, vendors, resellers, and employees in the same office or remote locations. Utilizing the powerful paperless office features, you'll reduce paper costs by eliminating the need to print lengthy reports and waste precious office space for storage, and reduce the time you and your employees spend searching through old files and reports. With paperless office, you can quickly and easily find files, view reports and forms, and print only the pages you want. And, when you need them again, retrieve them from the archives using intuitive search and sort tools.



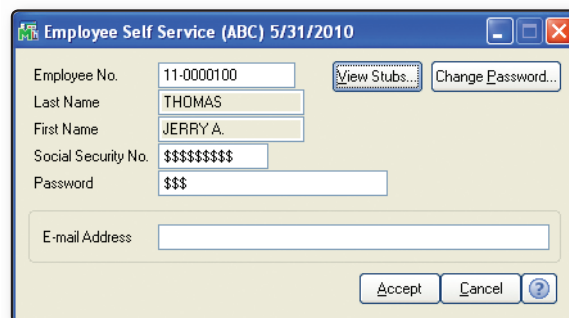
Enhanced Payroll and Accounts Payable Tax Reporting

To streamline your tax reporting processes, we've added more federal and state eFiling and reporting functionality in 4.3. Over 250 federal and state Unemployment, Withholding, and New Hire reports are now included to assist you with filing payroll tax information. Automatically eFile W-2s and 1099s to the appropriate state and federal agencies, then print and mail the forms directly to your employees, while securely posting the information on a Web site for their immediate access. Offered on a transaction fee basis, our eFiling Service provides the ability to streamline the tax reporting process for you. Or, for no additional fees, all federal and state forms will be available to you to print and mail. You can use blank, perforated W2 and 1099 forms, available for purchase from our Forms Division.



Productive and Secure Direct Deposit

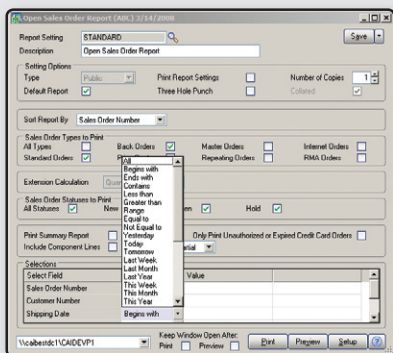
Add direct deposit functionality, for an additional fee, to your Sage MAS 90 and 200 4.3 Payroll system to reduce the time and cost associated for you to process and print checks, as well as time spent by your employees traveling to their financial institutions to deposit their pay. Offer your employees split disbursements between multiple accounts, such as savings and checking, even if they are with different institutions, based on fixed dollar amounts or percentages. Your employees can view their own direct deposit stubs through the password protected employee self-service viewer.



You Asked for It!

We've incorporated many enhancements as a direct result of your requests and from recently conducted usability studies. We've focused on adding value and efficiencies to enable your growing business to work the way you do. These customer-requested options allow you to:

Simplify report selection with straightforward terms such as: Yesterday, Today, Tomorrow, Last Week, Last Month, Last Year, Last 7 Days or Newer, 30 Days or Older, etc.



Readjust your selection criteria with ease. Did a "No Data Selected to Print" message appear? No worries, now the report selection window will stay open so you can produce your desired report.

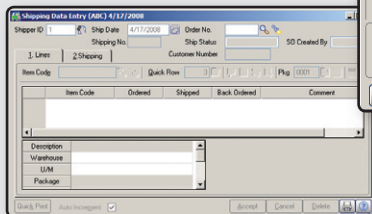
Return to the report selection screen after previewing and printing your reports, so you can adjust your selection criteria; available in General Ledger, Accounts Receivable, Accounts Payable, Bank Reconciliation, and Sales Order. Change your mind? Simple, now you can vary your date range or make changes to the print criteria selections until you choose to close the screen.

Reduce the time you spend selecting report criteria, view all print criteria on one screen and utilize smart selection — the system will choose an operand (equal to, range, etc.) intuitively, depending on your entry.

Set your Income Statement Format to Actual, Budget, and Budget Variance values for comparative information between any financial periods—Period to Date, Year to Date, or Both Period and Year to Date period options. In General Ledger, you can reduce the number of pages printed for a Financial Trend Report by choosing condensed formatting.

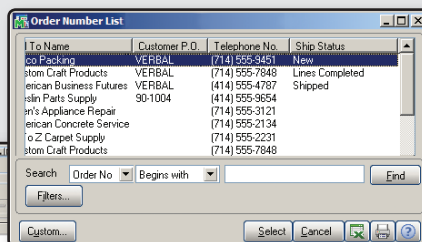
Allow information to be automatically entered into boxes 8 and 9 in the new Internal Revenue Service 1099-INT form.

Get up-to-the-minute status of customer orders through a status column that can be viewed and shared by your shipping and customer service personnel. Status messages include: "New," "Lines Complete," and "Shipped."



Streamline the process of updating your customer records in Accounts Receivable by utilizing the Global Customer Change Field Utility to change the assigned salesperson. When a salesperson leaves or joins the company, you'll be able to completely reassign your accounts throughout the system.

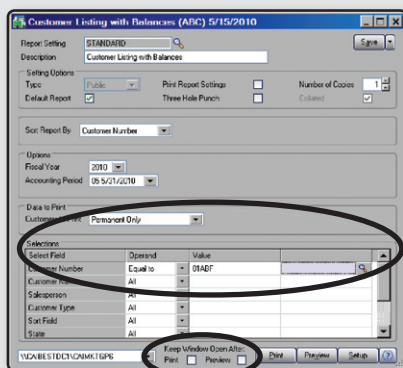
Utilize the Split Commissions option in Sales Order, so the commission percentage of your pre-assigned salesperson will appear as the default amount.



Thwart errors if your users enter a discount where it isn't allowed; a new warning will require them to choose an action and make adjustments to the lines on their Sales Order before invoicing.

Scan multiple items for shipment more efficiently when you're using a wedge scanner. A new system option will recognize the item scanned, and your shipping personnel will quickly move through the order without keyboard interaction.

Print your standard reports and forms automatically on your default printer, regardless of who previously saved the report.

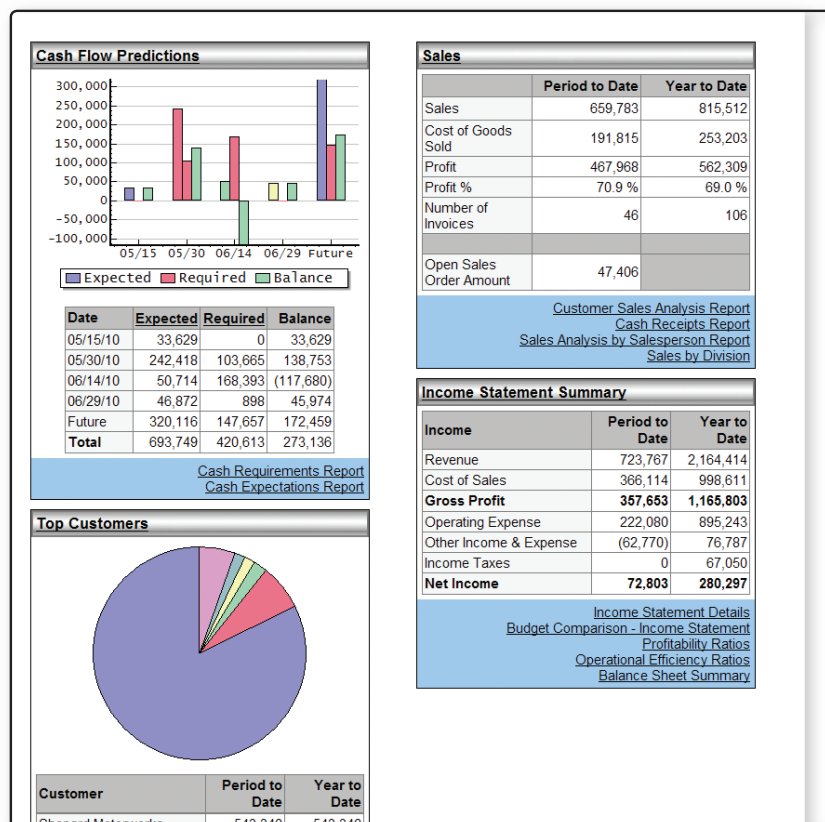


Proficiently Manage Your Fixed Assets

Sage MAS 90 and 200 Fixed Assets provides fast, dependable, customizable management of your fixed assets—whether you have 10 or over 1,000 items. In 4.3, you can more efficiently track assets and realize tax savings by auto-creating assets when you're entering invoices in Accounts Payable. Alternatively, during Purchase Order Entry assign an asset template, so in Receipt of Goods with an invoice, your register will automatically update the asset so you can manage it effectively from acquisition to disposal.

Automatically create a fixed asset during Purchase Order Entry by assigning an asset template, so during Receipt of Goods with Invoice your receiving personnel won't be required to make any additional entries.

The 'Receipt of Goods Entry' window shows a receipt for item 6655, 'PRINTER STAND W/ BASKET', with a unit cost of 81.25. The 'Additional Data Entry Fields' dialog box is open, showing fields for Weight (25), Product Line (PS&A), Product Type (Finished Good), Costing (Average Cost), and Asset Template (Computer, Desktop).



Start your day with the information you need most using Business Insights Dashboard. Use a simple startup page wizard to choose the Sage MAS 90 and 200 information you want to see on your desktop. Keep your finger on the pulse of your business with the level of details you want.



End-to-end solutions. Expert advice.
Ongoing support. That's Sage 360®.

Sage Software supports the needs, challenges, and dreams of 2.8 million small and mid-sized business customers in North America through easy-to-use, scalable and customizable software and services. Sage Software is a subsidiary of The Sage Group plc, a leading international supplier of business management software and services formed in 1981 and listed on the London Stock Exchange since 1989.

sage
software
Your business in mind.